





A luxury two bedroomed first floor apartment recently converted to a high specification together with garden and parking to the rear. The development is accessed via a remote gated entrance leading to the secure carparking and gardens with an allocated seating area for each apartment. The property benefits from underfloor heating and fitted floor coverings. The accommodation includes an entrance hall, spacious open plan living room/kitchen with large bay window to the front. The modern kitchen with breakfast bar area includes integrated hob, double oven, dishwasher and fridge/freezer. There are two bedrooms and a luxury shower room/wc with walk in double shower. The first floor can be accessed via stairs or the lift.







- Two bedroomed first floor apartment with gated access
- Lift and stairs to first floor
- Secure parking and garden
- Newly converted to a high specification
- Luxury shower room/wc and kitchen with integrated appliances

#### GENERAL INFORMATION

Tenure: Leasehold 999yrs from 2024. Service charge £420 per quarter. Each apartment owner will have a 1/5th share of the freehold.

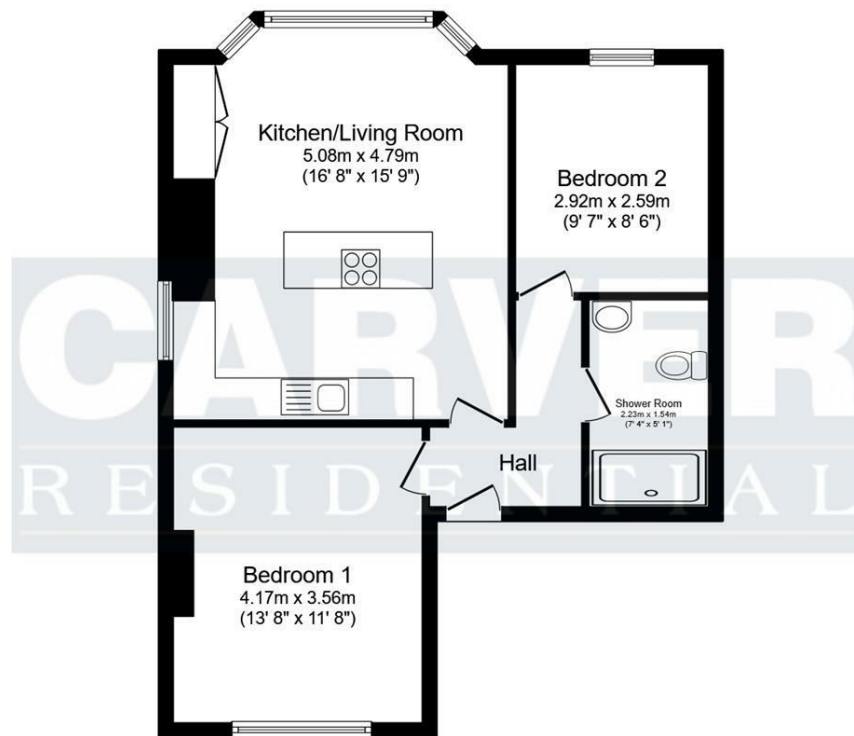
Services: Gas central heating, mains electric, water and drainage.

Double glazing ( Not bay window )

Local Authority: North Yorkshire Band B

Buyer(s) Identification Checks

Should a purchaser(s) have an offer accepted on a property marketed by Carver Residential they will need to undertake an identification check. This is done to meet our obligation under Anti Money Laundering Regulations (AML) and is a legal requirement. We use a specialist third party service to verify your identity, this is not a credit check and will have no effect on credit history. The cost of these checks is £36 inc. VAT per buyer, which is paid in advance, when an offer is agreed and prior to a sales memorandum being issued. This charge is non-refundable.



### First Floor

Floor area 61.0 sq.m. (657 sq.ft.)

Total floor area: 61.0 sq.m. (657 sq.ft.)

This floor plan is for illustrative purposes only. It is not drawn to scale. Any measurements, floor areas (including any total floor area), openings and orientations are approximate. No details are guaranteed, they cannot be relied upon for any purpose and do not form any part of any agreement. No liability is taken for any error, omission or misstatement. A party must rely upon its own inspection(s). Powered by [www.Propertybox.io](http://www.Propertybox.io)

Energy Efficiency Rating		
	Current	Potential
Very energy efficient - lower running costs		
(92 plus) <b>A</b>		
(81-91) <b>B</b>		
(69-80) <b>C</b>	80	80
(55-68) <b>D</b>		
(39-54) <b>E</b>		
(21-38) <b>F</b>		
(1-20) <b>G</b>		
Not energy efficient - higher running costs		
England & Wales		EU Directive 2002/91/EC

**We can search 1,000s of mortgages for you**

It could take just 15 minutes with one of our specialist advisers:  
Call: 01325 380088. Visit: Any of our Offices. Online: [www.mortgageadvicebureau.com/carver](http://www.mortgageadvicebureau.com/carver)



Your home may be repossessed if you do not keep up repayments on your mortgage.  
There will be a fee for mortgage advice. The actual amount you pay will depend upon your circumstances.  
The fee is up to 1% but a typical fee is 0.3% of the amount borrowed

MAB 6202



These particulars do not constitute any part of an offer or contract. None of the statements contained in these particulars are to be relied on as statements or representations of fact and any intending purchaser must satisfy himself by inspection or otherwise to the correctness of each of the statements contained in these particulars. The vendor does not make or give, and neither Nick & Gordon Carver Residential or Commercial, Nick & Gordon Carver, nor any person in their employment has any authority to make or give any representation or warranty whatever in relation to this property



**14 Duke Street, Darlington**  
**Co Durham, DL3 7AA**  
**01325 357807**  
**[sales@carvergroup.co.uk](mailto:sales@carvergroup.co.uk)**

**63 Dalton Way, Newton Aycliffe**  
**Co Durham DL5 4NB**  
**01325 320676**  
**[aycliffe@carvergroup.co.uk](mailto:aycliffe@carvergroup.co.uk)**

**41 Market Place, Richmond**  
**North Yorkshire, DL10 4QL**  
**01748 825317**  
**[richmond@carvergroup.co.uk](mailto:richmond@carvergroup.co.uk)**

**219 High Street, Northallerton**  
**North Yorkshire DL7 8LW**  
**01609 777710**  
**[northallerton@carvergroup.co.uk](mailto:northallerton@carvergroup.co.uk)**

**[www.carvergroup.co.uk](http://www.carvergroup.co.uk)**